

Data Sheet no. 4.10/7

## Modules for Mechanical Construction

### Description of junction element:

As junction element a six-segment PD-free electrode is used for electrical and mechanical connection. The segment diameter is 125 mm up to 250 kV and 250 mm for higher voltages (PD-free up to 350 kV). The components are connected to the junction elements with a cap screw.

In order to reduce the number of elements and

to optimize the space requirement, it is possible to use the wall element WE especially for the DC Voltage Test System GBS 10/270 version 2. The wall element WE shall be used instead of the vertical earthing connection consisting of the two elements VE and one VEZ. The wall element shall be connected to earth by a copper band, to guarantee sufficient grounding.

### Technical Data:

type code	rated voltage kV	dimensions (b) mm	diameter of segment (t) mm	weight kg
KE 1	240	188	125	1.3
KE 2	350	356	250	3.5
WE	-	66	250	0.5

### Dimensional drawing:

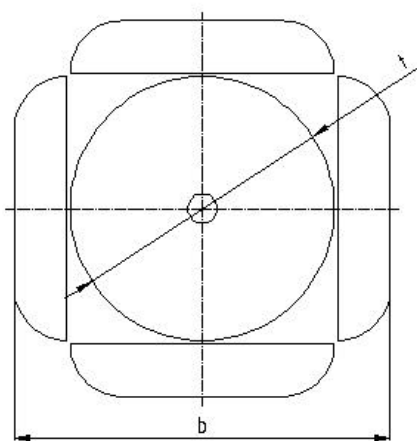


Fig. 1: KE 1/KE 2

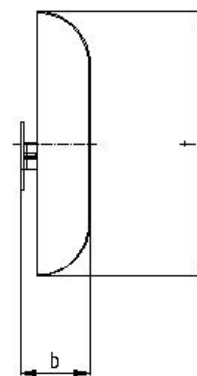


Fig. 2: WE

## Description of base, base connecting elements and storage trolley

Base and base connecting elements (types FE and FV) ensure the stable assembly of the modules, the reliable earthing of the HV circuit and the safe operation of power, control and

measuring cables.

The trolley LW is intended to storage the components of the high voltage module system.

### Technical Data:

type code			FE 1	FV 1	LW
dimensions	l	mm	436	770	710
	h	mm	114	30	720
	b	mm	436	70	890
weight		kg	6.3	2	23

### Dimension drawing:

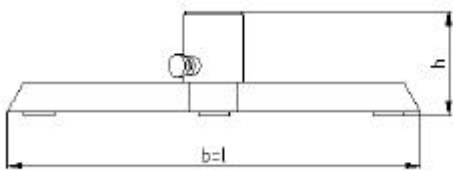


Fig. 3: FE 1

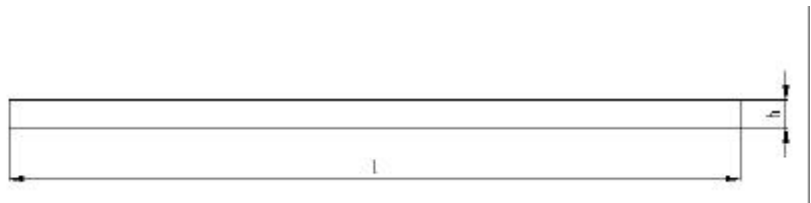


Fig. 4: FV 1

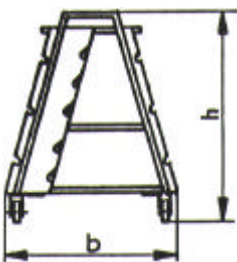


Fig. 5: LW